

SANXO-systems

Finnish-Hungarian Measurement and Automation Ltd.

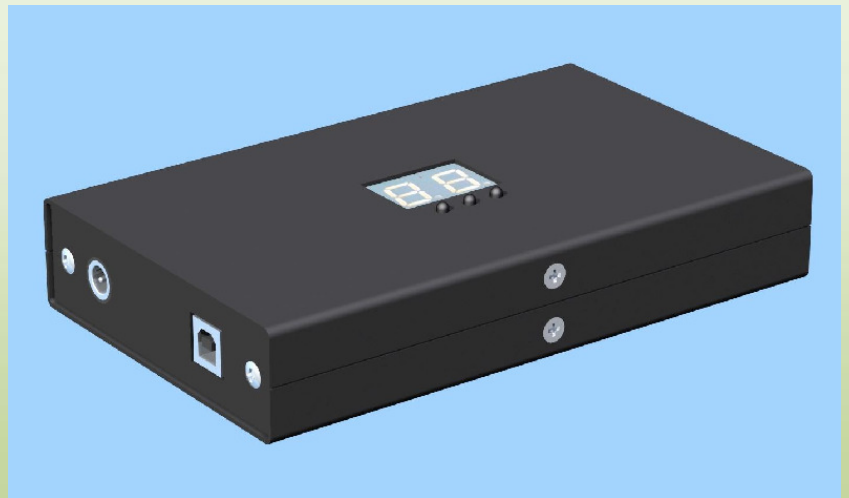


LEDLINK universal LED controller

- **USB interface**
- **2 digits User Interface**
- **easy to use fine control**
- **strobe function**

The **LEDLINK** is an universal LED controller. Several types of LED can be controlled via USB port by using a PC or in manual mode by using the buttons under the 2 digits display. It can handle different input supply voltages in a range from 12 VDC to 24 VDC.

Two parallel output LED channels can be controlled separately and each channel can supply 2*32V at 1.2 Amp. The built-in protection helps the user to prevent the LEDs. The user can set a limit per output channel for preventing the LEDs from overdriving. Besides the continuous operation, the **LEDLINK** can be used in strobe mode using a fast DI channel. Dimensions: 140x80x25mm, metal enclosure.



Two parallel output LED channels can be controlled separately and each channel can supply 2*32V at 1.2 Amp. The built-in protection helps the user to prevent the LEDs. The user can set a limit per output channel for preventing the LEDs from overdriving. Besides the continuous operation, the **LEDLINK** can be used in strobe mode using a fast DI channel. Dimensions: 140x80x25mm, metal enclosure.

Power input ($I_{IN} = 2A$)	$\text{Sum}(I_{LED})^{MAX}$
24 VDC	1.2A
20 VDC	1.0A
18 VDC	0.9A
15 VDC	0.7A
12 VDC	0.6A



Example1: 18 LEDs (@ 3.5V) Altogether 36 LEDs can be controlled a time by **LEDLINK**.

Example2: 28 LEDs (@ 2.2V) Altogether 56 LEDs can be controlled a time by **LEDLINK**.

Example3: Using only one channel of **LEDLINK** 18 power LEDs (1Watt, @ 3.5V) can be used.

Example4: Using only one channel of **LEDLINK** 9 power LEDs (3Watt, @ 3.5V) can be used a time.

SANXO-systems Ltd

Address: Arany J. út 87/B
H-1221, Budapest
HUNGARY
Tel: +36 30 9767539
Email: info@sanxo.hu



SANXO-innovation Oy

Address: Iivisniemenaukio 2A7
02260, Espoo
FINLAND
Puh: +358 40 7672511
info@sanxo-innovation.com